

WINLINK IN REVIEW

OR, WHY WOULD ANYONE WANT TO USE THIS SOFTWARE
ANYWAY.....

NORM DALLURA-KN4YFI AND FRED CASTELLO-KF4FC

APRIL 2025 VARA CLUB MEETING

WINLINK IS SIMPLY EMAIL OVER HAM RADIO



WINLINK GLOBAL RADIO EMAIL® (PULLED DIRECTLY FROM WEBSITE)

- A network of amateur radio and authorized government stations that provide worldwide radio email using radio pathways where the internet is not present.
- The system is built, operated and administered entirely by licensed "Ham" volunteers.
- It supports email with attachments, position reporting, weather and information bulletins, and is well-known for its role in interoperable emergency and disaster relief communications.

OFFICIALLY CALLED WINLINK EXPRESS

- The software performs error correction automatically.
- Because of this, it is viewed as one favorable method of passing traffic in emergencies.
- It also supports STANDARD FORMS
- Like everything else in our ham radio world, encryption is NOT allowed.
- So, don't put anything in the message that you are not willing for the whole world (and the newspapers) to read.

HOW DO YOU USE IT

FIRST CONSTRUCT YOUR MESSAGE



No active session.

System Folders	Date/Time	Message ID	Size	Source	Sender	Recipient	Subject
Inbox (86 unread)							
Read Items (0)							
Outbox (0)							
Sent Items (216)							
Saved Items (1)							
Deleted Items (26)							
Drafts (0)							
Personal Folders							
Hosp Ex 10-18-23 (10)							
Hosp Ex 10-26-23 (8)							
Hosp Ex 10-4-23 (9)							
Hosp Ex 7-10-24 (7)							
Hosp Ex 7-17-24 (13)							
Global Folders							
Contacts							

THEN SEND IT

THIS WAS SENT ON HF VIA A FAIR CONNECTION

Winlink Express 1.7.21.0 - KF4FC/3

www.BANDICAM.com

KF4FC Settings Message Attachments Move To: Deleted Items Delete Open Session: Vara HF Winlink Logs Help

In Vara HF Winlink session.

	Date/Time	Message ID	Size	Source	Sender	Recipient	Subject
Inbox (86 unread)							
Read Items (0)							
Outbox (1)							
Sent Items (217)							
Saved Items (1)							
Deleted Items (26)							
Drafts (0)							
System Folders							
2025/02/22 2...	2025/02/22 2...	HI238PQ4BIHH	189	KF4FC-3	NWR-AUGUS...	KF4FC	TEST4
2025/02/19 1...	2025/02/19 1...	1X8IUZK5ZJCE	3200	KF4FC-3	NWR-AUGUS...	KO4JMH...	HICS-251 Winlink Wednesday Hospital Subnet, Augusta He
2025/02/12 1...	2025/02/12 1...	G0GGFBX0P...	197	KF4FC-3	NWR-AUGUS...	KF4FC...	test 1
2025/02/12 1...	2025/02/12 1...	3QT8A32M4P...	353	KF4FC-3	NWR-AUGUS...	KO4JMH...	Hospital Subnet Winlink Wednesday Checkin
2025/02/05 1...	2025/02/05 1...	578NP3TEXAL1	3420	KF4FC-3	NWR-AUGUS...	KO4JMH...	
2025/02/03 12:45	2025/02/03 12:45	CR4NJ8XOM46E	191	KB2LOZ	KB2LOZ	KF4FC	
2025/01/29 1...	2025/01/29 1...	PN96YZ59KJ00	4908	KF4FC-3	NWR-AUGUS...	NWR-S...	
2025/01/23 1...	2025/01/23 1...	1027XAMP4...	4593	KF4FC-3	NWR-AUGUS...	NWR-S...	
Personal Folders							
Hosp Ex 10-18-23 (10)							
Hosp Ex 10-26-23 (8)							

Vara HF Winlink Session - KF4FC

Exit Settings Channel Selection Map Forecast Auto-connect Next chan. Start Stop Abort

W4SNA Center Freq: 10146.500 Dial Freq: 10145.000 Bandwidth: 2300 Bearing: 211 Quality: 50

Favorites: KB2LOZ @ 24946.500 Select Add to favorites Remove from favorites

Channel Free In: 0/0 Out: 0/0 BPM: 0/0 Disconnected

```

*** Launching VARA TNC
*** Successfully connected to VARA TNC at 127.0.0.1 port 8300
*** Maximum signal bandwidth is set to 2300 Hz.
*** Using Flex radios, COM16, 9600 baud
*** Ready
*** This is a registered version of Vara TNC that can operate at full speed.
*** Calling W4RJG
*** Failure connecting with W4RJG
*** Calling N2GWK
*** Failure connecting with N2GWK
*** Calling KD4JWF
*** Failure connecting with KD4JWF
*** Calling KB3HNB
*** Failure connecting with KB3HNB
    
```

VARA HF v4.8.7 KF4FC

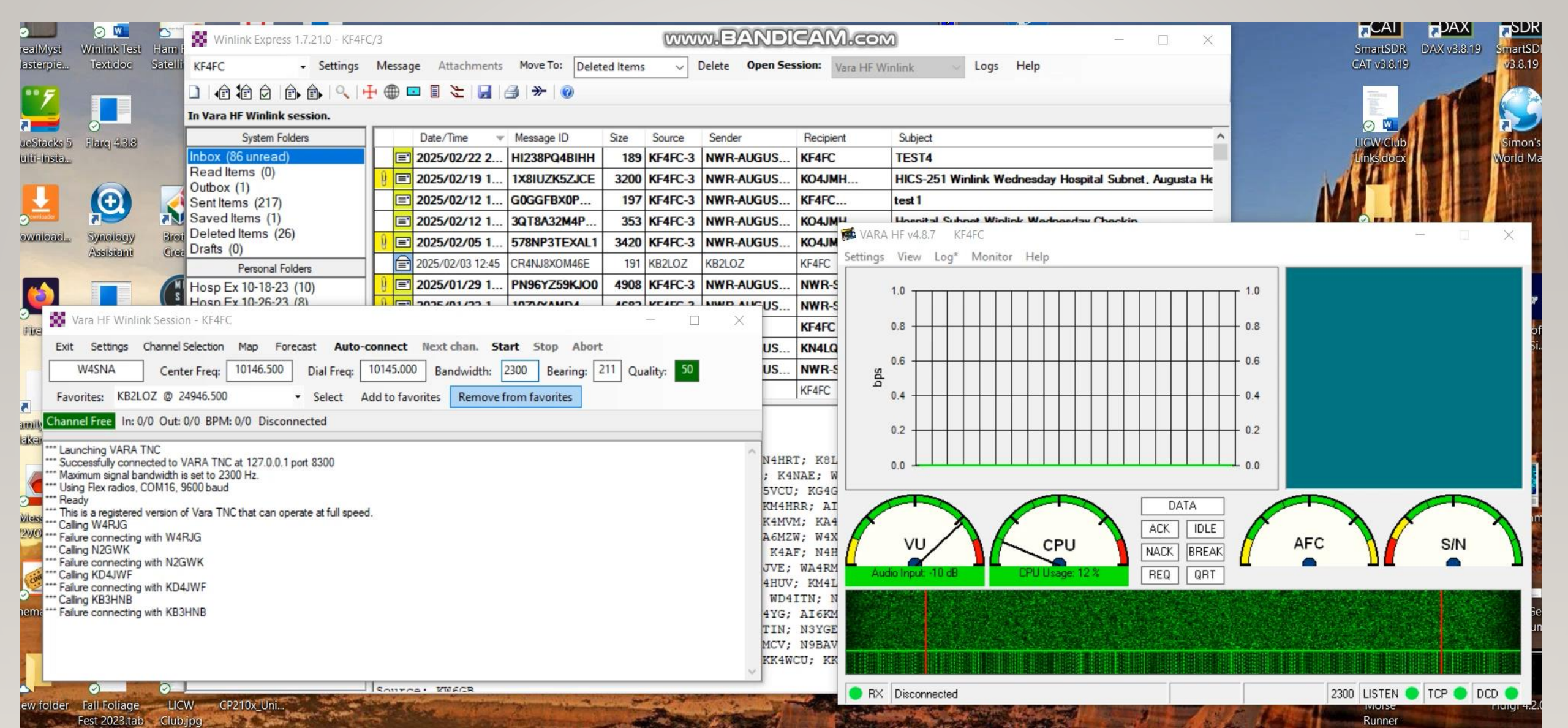
Settings View Log* Monitor Help

bps

VU Audio Input -10 dB CPU CPU Usage: 12% AFC S/N

DATA ACK IDLE NACK BREAK REQ QRT

RX Disconnected 2300 LISTEN TCP DCD



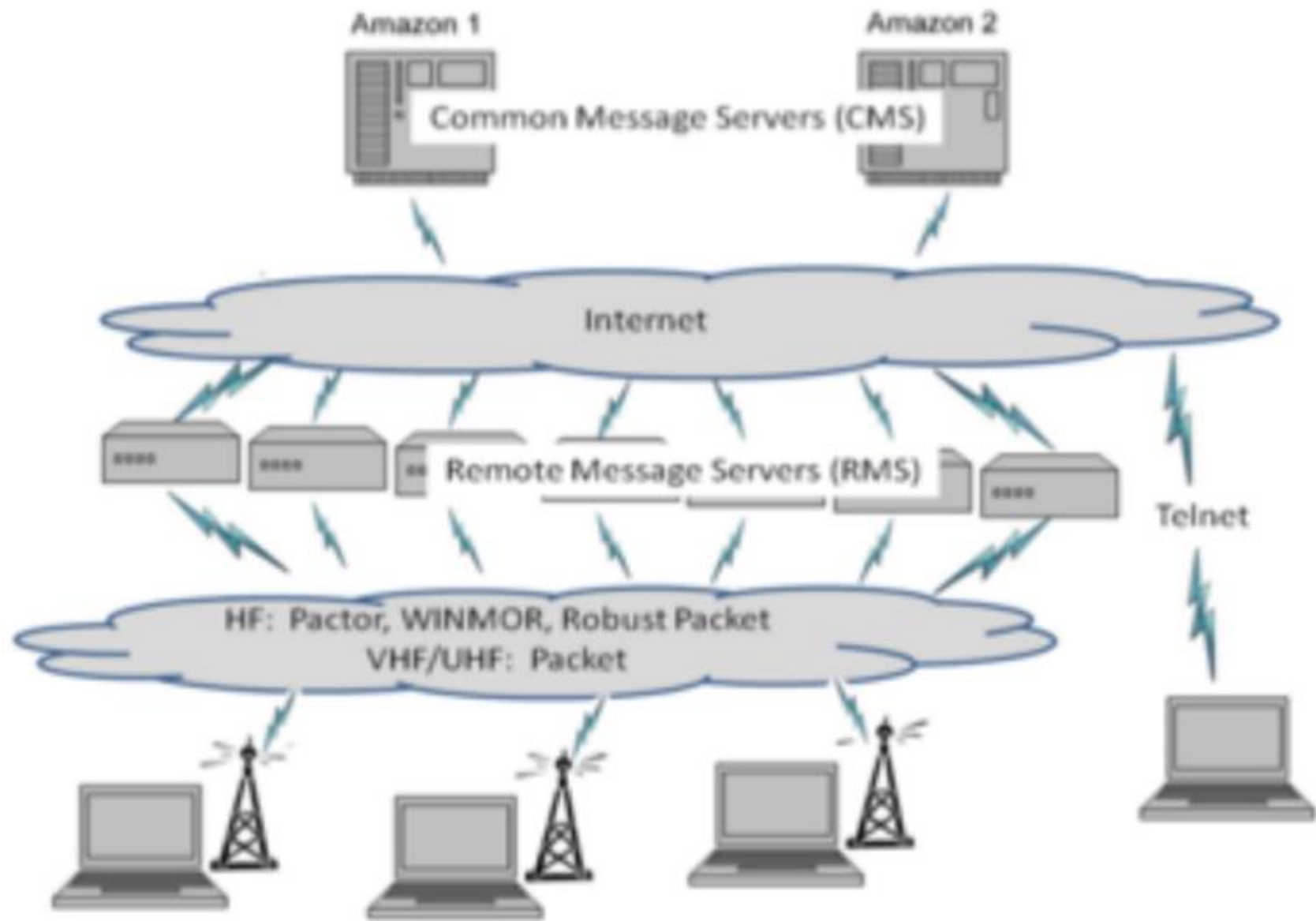
FUNDAMENTALS



- CMS

- RMS (gateway)

- Client (you)



LOGISTICS

- The majority of time digital QSO's are made between initiating ham station and Remote Message Servers or GATEWAYS. The GATEWAYS are connected to the internet and their function is to pass the messages up to the COMMON MESSAGE SERVERS.
- These computers ideally hold exact copies of all messages in the system and this duplication presents redundancy.
- PEER TO PEER: This is when the initiating ham station connects with another ham station directly when that receiving station is the desired recipient of the message. All without going through a CENTRAL SERVER or GATEWAY.

STANDARD FORMS

- There is a host of forms that are supported by Winlink.
- Because of standardization, the program can just send the data in the form and does not need to send the form itself or the formatting of the form.
- Forms such as:
 - Incident Command System forms
 - Hospital Incident Command System forms
 - ARRL forms
 - FEMA forms
 - etc

WHO USES THIS STUFF

- Emergency managers- Significant usage during emergencies (hurricane's, floods, etc.)
- Yachts at sea
- There has been a push over the last number of years for Winlink Wednesday
 - Originated in order to get users to practice using the software to “check in”
 - Started in Virginia and is still centered here but now have check ins from around the USA and World!
- Hospitals
 - Provides a form of error corrected backup communication.

IF YOU HAVE NOT USED IT, PLEASE CONSIDER TRYING IT

- There are a number of experienced users in the club who would be willing to help get you set up.
- It is a great option/alternative to your standard modes that you might be called on to use in an emergency.

QUESTIONS

COMMENTS